

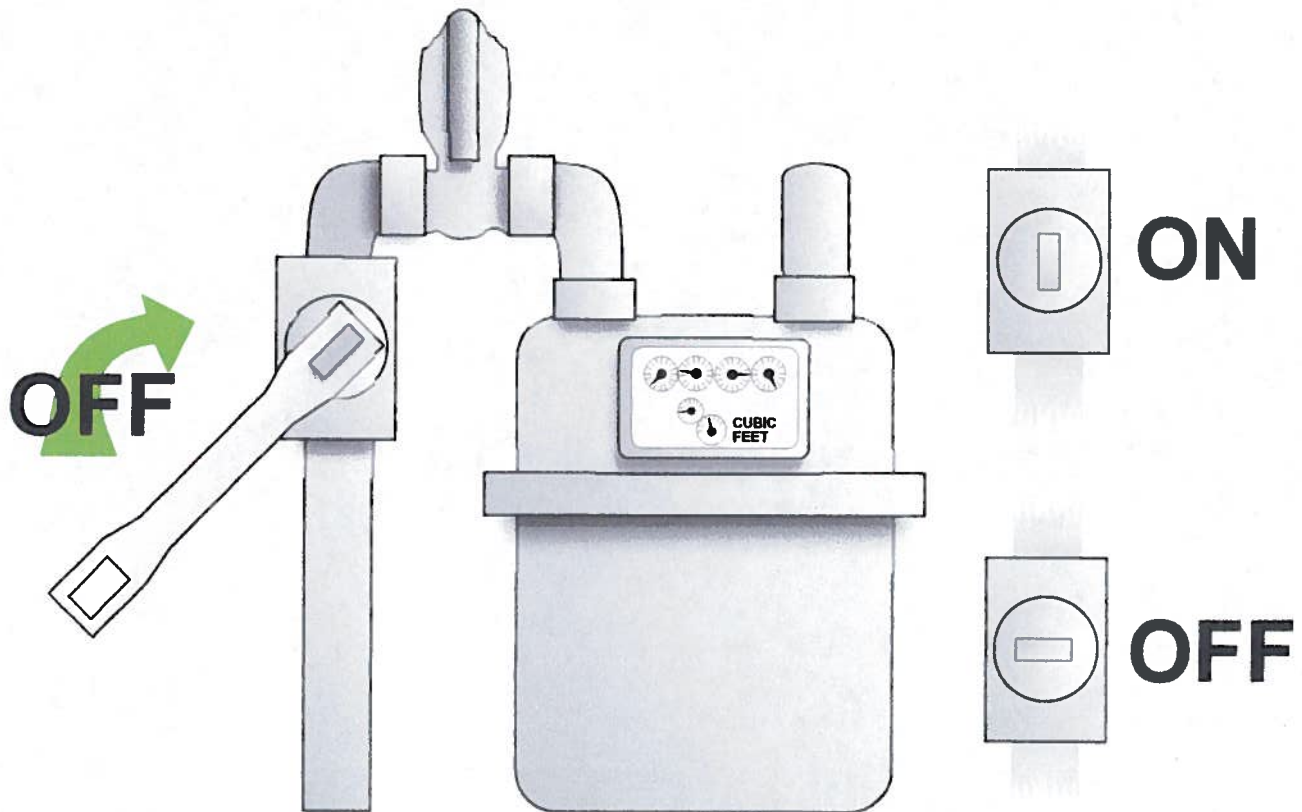
POST THIS "POTTY POSTER" WHEREVER YOU HAVE A CAPTIVE AUDIENCE!

## TURNING OFF YOUR GAS: HOW. WHEN. WHY.

Find your gas shutoff valve, and learn how it works.  
Keep an appropriate wrench at the shutoff valve for emergencies.  
After an earthquake or accident, shut off your gas IF you:

<b>HEAR IT</b>  hissing leak	<b>OR</b>	<b>SEE IT</b>  spinning dials	<b>OR</b>	<b>SMELL IT</b>  odor of gas
--	-----------	---	-----------	--

**REMEMBER: DO NOT TURN YOUR GAS BACK ON!**  
Only your gas company can do so safely.



CARD – Collaborating Agencies Responding to Disasters  
(510) 451-3140 || [www.CARDCanHelp.org](http://www.CARDCanHelp.org)  
CARD is a 501(c)3 nonprofit organization